



Manual

L401

Contents

■ Product Description and Specifications	3
● Parts Description	3
■ Function introduction	4
● Features	4
● Buttons Functions	5
■ Operation	5
● Power on/off	5
● Riding interface.....	6
● Assist level switch	6
● Turn on/off the light	6
● Clear trip data	7
● Error Code	8
● User Menu	9
■ Advanced Menu	11
● Enter advanced menu.....	11
● Wheel Size	11
● Battery Voltage	12
● Sensor	12
● Reset	13
● Eixt Menu	13
■ Attentions	14

■ Product Description and Specifications

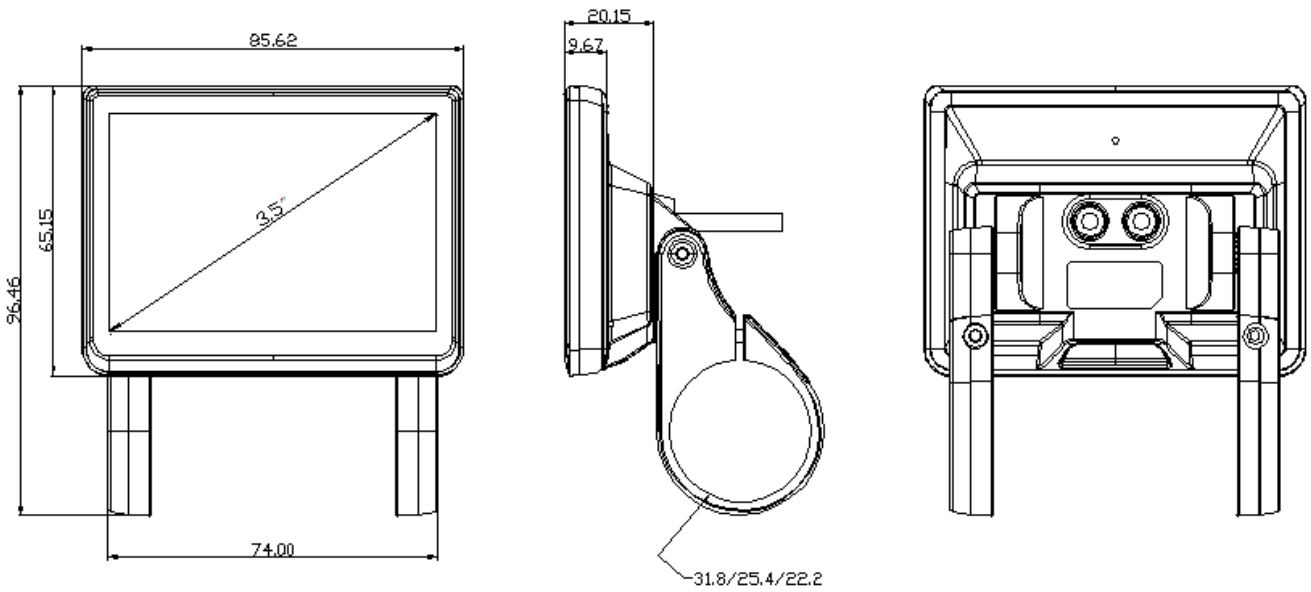


DTK3 Button

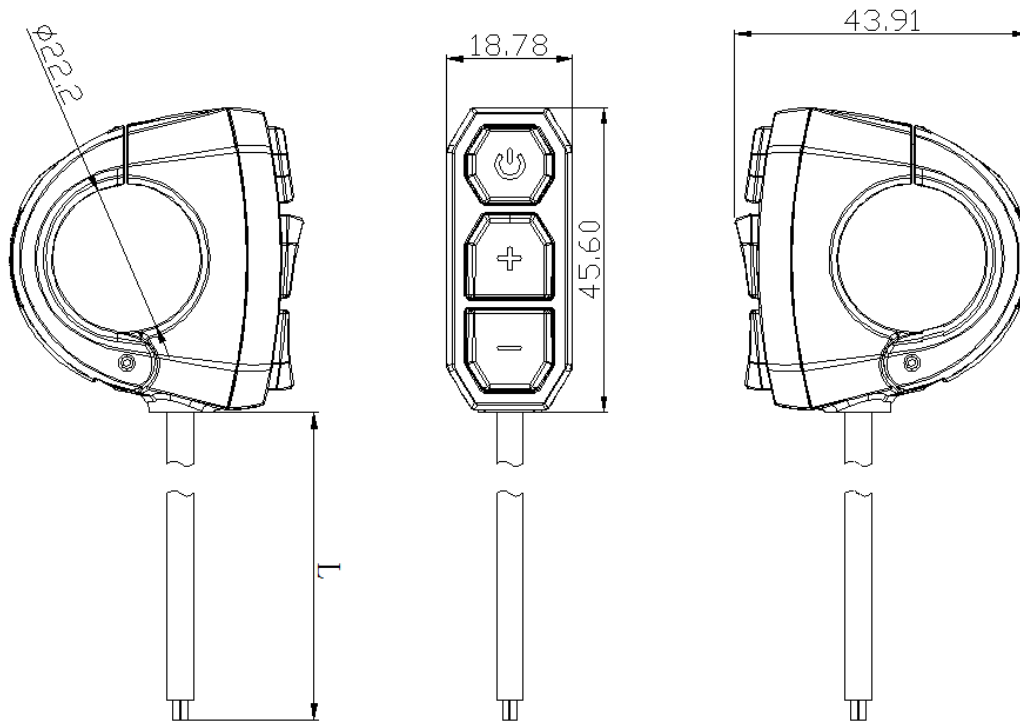


L401 Display

● Parts Description



Display Dimensions



DTK3 Button Dimensions

■ Function introduction

● Features




L401 supports the common riding parameters and statistical results, as well as some useful functions:

- ◆ Real-time speed, Max speed, Average speed
- ◆ Real-time motor power
- ◆ Battery indicator
- ◆ Assistant level
- ◆ Odometer, trip
- ◆ Trip time
- ◆ Calorie burnt
- ◆ Light indicator
- ◆ Metric(km/h)/Imperial(mph) switching
- ◆ Error codes indicator
- ◆ Auto headlights, Brightness adjustment, automatic backlight
- ◆ Auto Power-off
- ◆ USB Port (5V/500mA)

In addition, the Bluetooth version also supports the following functions:

- ◆ APP connection
- ◆ Data synchronization
- ◆ Riding ranking
- ◆ Riding track recording

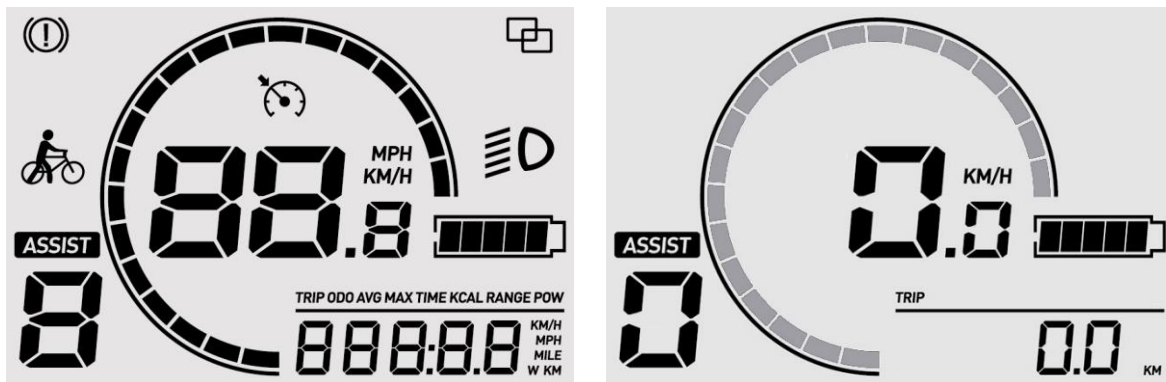
● Buttons Functions

Buttons	Name	Functions
	[Power]	1、 Power on/off 2、 Setting confirmation
	[+]	1、 Parameter adjustment 2、 Light turn on/off 3、 Menu operation
	[-]	1、 Parameter adjustment 2、 Push mode on/off 3、 Menu operation

■ Operation

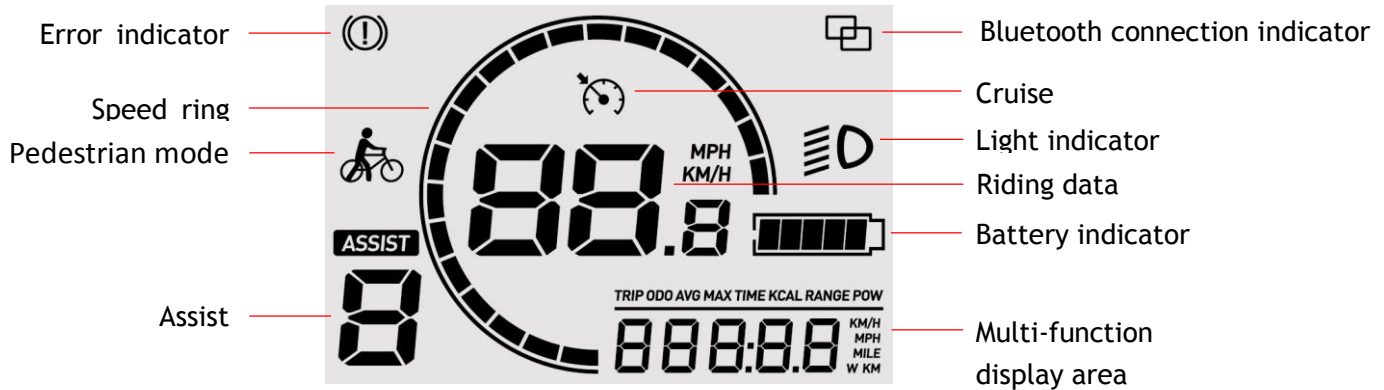
● Power on/off

Long press the [Power] button to power on, the boot interface will be shown for about 2s, followed by the riding interface:



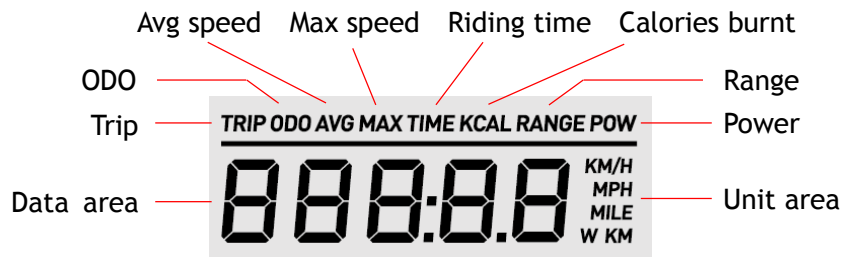
In any interface, long press the [Power] button, the shutdown interface will be shown for about 2s before power off:

● **Riding interface**



The speed ring is displayed according to the current speed and the speed limit value, and when the speed reaches the speed limit, the full ring is displayed.

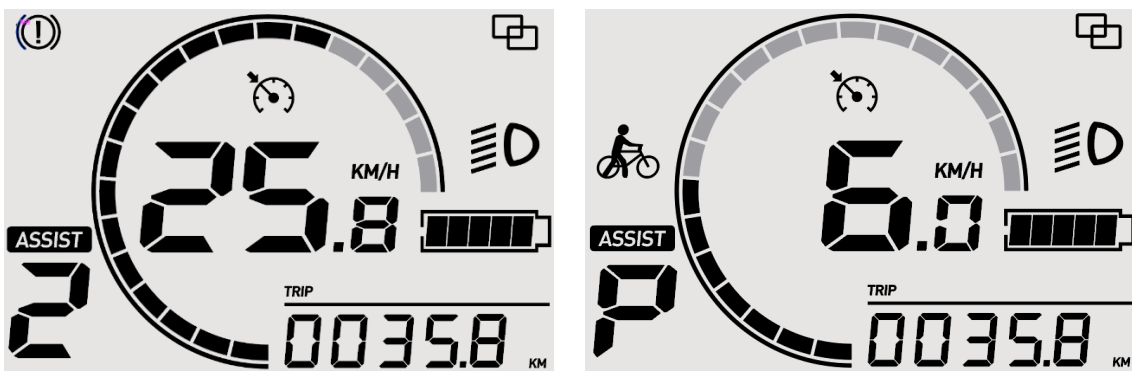
The parameters in the multi-function display area at the bottom right can be switched by clicking the [Power] button:



● **Assist level switch**

Click [+] or [-] to switch assist levels;

Press and hold the [-] button to enter the pedestrian mode, and release to exit.

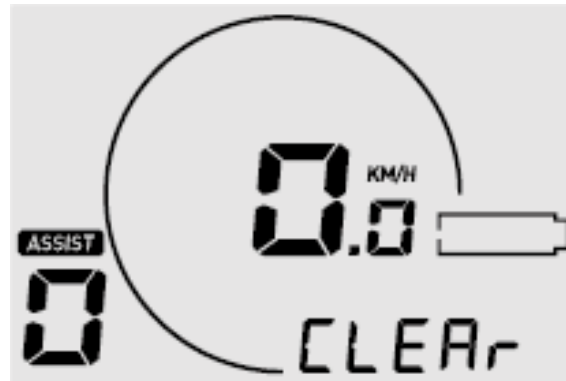


● **Turn on/off the light**

Long press [+] button to turn on/off the light.

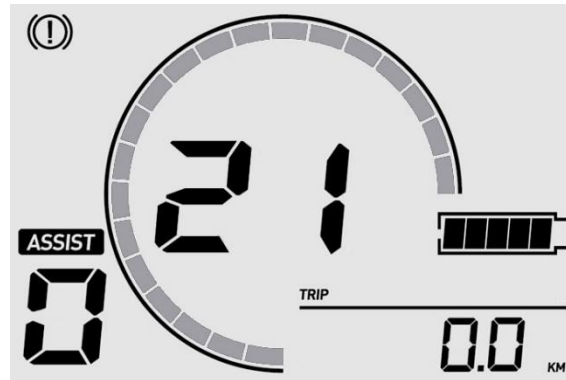
- **Clear trip data**

Long press [Power] & [+] button to clear trip data.



[Note] The trip time, max speed, average speed, and calories burnt will be also cleared by this operation.

● Error Code



Common error codes are as follows(Only for reference, depending on other electrical parts of the ebike):

KM5S protocol Error Code

Error Code	Meaning
21	Current or Mos Error
22	Throttle Error
23	Motor Phase Error
24	Motor Hall Error
25	Brake Error
26	Low-voltage protection
30	Communication Error

Li2 protocol Error Code

Error Code	Meaning
02	Brake Error
06	Low-voltage protection
07	Motor Phase Error
08	Throttle Error
09	Current or Mos Error
14	Motor Hall Error
30	Communication Error

● User Menu

To enter the user menu, please long press the [+] & [-] combination buttons for 2s on the riding interface when static.

To ensure the user's safety, it can only be accessed when static (when the speed is 0). In this interface, you can switch the submenu by clicking the [+] or [-] button, and enter the submenu by clicking the [Power] button

1、 Speed Limit

The first menu interface after entering the user menu.

Click the [+] / [-] button to adjust the speed limit value, click the [Power] button to confirm and go to the next menu interface.



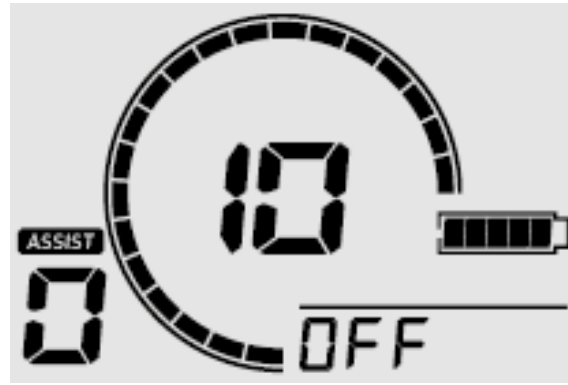
2、 Speed Unit

Click the [+] / [-] button to switch the speed unit, click the [Power] button to confirm and go to the next menu interface.



3、 Auto Power off.

Click the [+] / [-] button to adjust the value of auto power off, the adjustment range is 0-99(unit: min), 0=Never auto power-off, click the [Power] button to confirm and go to the next menu interface.



4、 Backlight Brightness

After entering the interface, the display area flashes to display the current backlight brightness, you can click the [+] / [-] button to adjust, the adjustment range is 1-5, click the [Power] button to confirm and go to the next menu interface.



5、 Bluetooth connection (Bluetooth version only)

After entering the interface, the numerical display area flashes "n", which means that the Bluetooth is not connected.

You can search and connect on the APP side. After the operation is successful, the interface displays "y" and stops flashing.



■ Advanced Menu

The L401 provides ebike manufacturers with an advanced menu that can be used to make adjustments to the ebike configuration and the following parameters:

- ◆ Wheel Size
- ◆ Battery Voltage
- ◆ Sensor

● Enter advanced menu

In the power off state, long press the [Power] button for 6s to enter the advanced menu login interface:



The lower right is the password area, click the [+] / [-] button to adjust the value of the flashing bit, click the [Power] button to switch the adjustment bit or confirm the login. When the password is wrong, the first digit will flash again, and the value of each digit can be readjusted at this time.

Please contact our sales to get the password.

● Wheel Size

In this interface, a prompt of "SIZE" appears at the bottom right, and the wheel size value in the data area flashes:



Click the [+] / [-] button to adjust, the adjustment range is 1-5

● Battery Voltage

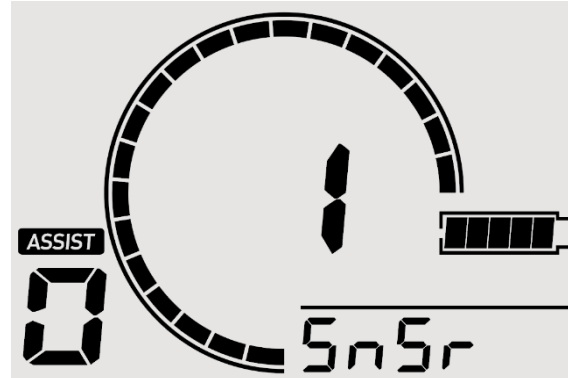
In this interface, a prompt of "BAT" appears at the bottom right, and the battery voltage value in the data area flashes:



Click the [+] / [-] button to adjust the value of auto battery voltage, the adjustment range is 36V/48V, click the [Power] button to confirm and go to the next menu interface.

● Sensor

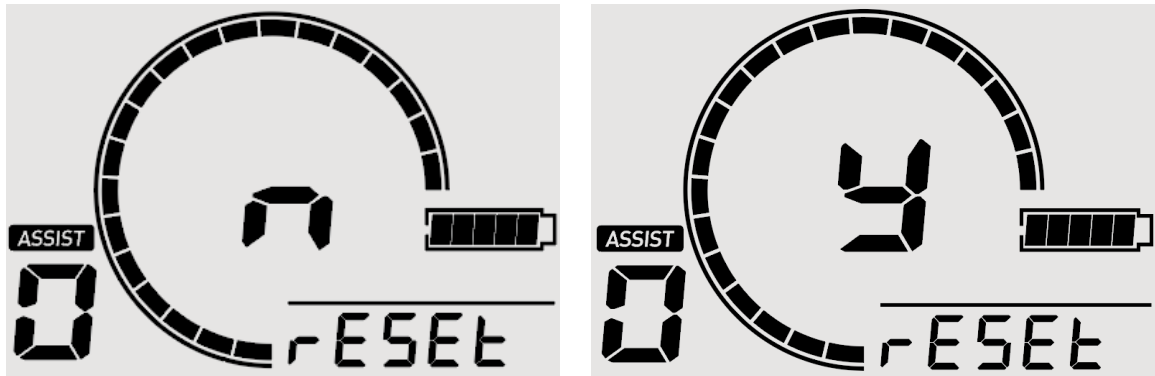
In this interface, a prompt of "SNSR" appears at the bottom right, it means SENSOR, and the sensor value in the data area flashes:



Click the [+] / [-] button to adjust the value of auto sensor, the adjustment range is 1--12, click the [Power] button to confirm and go to the next menu interface.

● Reset

In this interface, a prompt of "RESET" appears at the bottom right, and the data area flashes to display 'y' or 'n':



Click the [+] / [-] button to switch 'y' or 'n', click the [Power] button to confirm and go to the next menu interface.

● Exit Menu

1. When there is no operation for 60s in any interface, it will automatically back to the riding interface;
2. In any interface, press the [Power] button for 1s to power off.

■ Attentions

1. Be sure to power off first before connecting and disconnecting the cable, or the display will be totally damaged;
2. When fix the display to the ebike, please ensure that the torque of the screwdriver is about 0.5N.M (DO NOT EXCEED 0.6N.M), or it will cause damages to the handle;
3. Do not put the display into water;
4. The display can be wiped with wet and soft cloth, but DO NOT use any chemical liquid or spray on the display;
5. Please abide by local laws and regulations when scrapping, discard or recycle in an environmentally friendly way, and do not discard the instrument or any accessories as resident waste;
6. The damage and failure of the instrument caused by improper installation or use are not covered by the after-sale warranty.
7. For more information and support, please contact support@riding-evolved.com.